



*Ypsilanti Heritage Foundation*

January 1985

# NEWSLETTER

Last September our president, Jack Harris, escaped from his responsibilities here and ran away to England, where he taught in a small college at the edge of a tiny village in Kent and lived in the merry, green world of the English countryside, among the sheep and the cattle. Sometime in November pangs of guilt apparently overcame him, and he wrote to our vice-president, Bill Nickels, offering to do a program for us on some aspect of his idyllic life there. Bill, ecstatic, promptly scheduled him for the January meeting. Accordingly, it gives us great pleasure to announce a special program on England at our . . .

---

**NEXT MEETING:** Tuesday, January 22 - 7:30

**PLACE:** The Hutchinson House(High Scope), 600 North River

**SPEAKER:** Jack Harris

**PROGRAM:** Sandwich and Sissinghurst: Medieval Town and Twentieth-century Garden

---

This program will take us to two of Jack's most favorite places in Kent: (1) Sandwich, a medieval town on the eastern edge of the county, a few miles from where he worked, and (2) Sissinghurst Gardens, built by Harold Nicolson and Vita Sackville-West around the ruins of a great Tudor house, now recognized as one of the world's most beautiful gardens.

**QUESTION:** What can Sandwich tell us about preservation problems in Ypsilanti?

**QUESTION:** What can Sissinghurst teach us about gardening principles anywhere?

**OPEN TO THE PUBLIC - FREE!!! PROGRAM ONE HOUR OR LESS - SLIDES!!**

**Call all garden lovers, Anglophiles, and preservationist friends!!**

**Refreshments will be served.**

---

SOME GOOD NEWS IN A HARSH WORLD!

---

DEPOT TOWN LOOKED LOVELY, AGAIN this Christmas - especially the enormous, magical tree in Shankweilers' window!!

DOWNTOWN looked more festive and cheerful, too! The new front on the library is so perfect for the classic character of the building that one hardly notices the improvements, they are so RIGHT!!!

THE METAMORPHOSIS of Ralph Ellis' Bike Shop front from dull fifties fakery to original Gothic glory continues to delight the eye. An entire new (appropriate) front is going on the Italianate building directly behind the National Bank, and other shopfront restorations and renovations are in the works, we hear. BUT if you STILL have not seen the first-class restoration of the Ypsilanti Board of Realtors building at 47 N. Huron, feast your eyes on that now! DOWNTOWN is, as Bill Durant puts it, in a period of transition: let's give them all the encouragement we can!!

---

APPLICATION FOR MEMBERSHIP

Students and Senior Citizens	\$3.00
Individual	10.00
Family	15.00
Contributing	25.00

Make check payable to Ypsilanti Heritage Foundation and mail to 510 Roosevelt, Ypsilanti, Mi. 48197 % Mary Warner, Secretary-Treasurer

---

SAD NEWS, GLAD NEWS

---

Sad News: Tom and Ann Venner have left the great Gothic house at the corner of Adams and Pearl; and Keith Fineberg and Sue Barr have sold their house on Wash-tenaw.

Glad News: Jeff and Linda Lawther have bought the Venner property and have already moved in; and Jim Spencer and Nan Pummer have taken the place of Keith and Sue. Farewell, old friends! Welcome, new friends!

---

THE YPSILANTI HERITAGE FOUNDATION is a non-profit organization, dedicated to preservation education in Ypsilanti. Five meetings, open to the public - free, are held each year, including a May banquet honoring the Historic Structure Marker award winners for the year. The Historic Home Tour is the Foundation's major contribution to the Ypsilanti Heritage Festival in August. A Newsletter is sent to all paid members before each of the five meetings.

---

Name \_\_\_\_\_

Address \_\_\_\_\_

---

Phone \_\_\_\_\_



Ypsilanti Heritage Foundation  
510 Pearl  
Ypsilanti  
Mi. 48197





*Ypsilanti Heritage Foundation*

MARCH 1985

# NEWSLETTER

**NEXT MEETING:** Tuesday, March 26, 1985 - 7:30 p.m.

**PLACE:** Michigan Historical Collections, BENTLEY HISTORICAL LIBRARY  
University of Michigan, North Campus  
1150 Beal Avenue, Ann Arbor

**SUBJECT:** The Bentley, as a Source for the Study of Buildings and Architecture Related to Ypsilanti AND a Tour of the Facilities

Usually, on those occasions when we go to a library, we go on our own, alone, in search of what it may offer. Many of us, however, though we may be frequent libraryusers, have never ventured into that most magnificent of history collections known as "The Bentley", on the North Campus of the University of Michigan - yet the riches of that library could enhance the lives of all of us, if we discover its treasures.

So, let's do SOMETHING SPECIAL: let's go as a party of dedicated Ypsilantians, like those who go exploring - panning for gold, as it were - in search of adventure. Who knows what we may discover about the history of our houses and our town? As a group we can share our own individual interests, while we discover the Bentley, that gold mine to the west!

The Heritage Foundation has arranged with the Bentley for a 35 minute presentation on materials relevant to Ypsilanti. Both Ms. Marjorie Barritt, Acting Reference Archivist, and Mr. William Wallach, Assistant Director, will be on hand for questions and will lead a tour of this very special institution.

JOIN US FOR THIS OUTING!!! (If you've been there before, come and share what you already know!)

REFRESHMENTS, as usual, will be served!!

(Directions to the Bentley elsewhere in this Newsletter)

## REAL ESTATE LISTINGS:

FIRST, CONGRATULATIONS TO TOM WARNER, our man in real estate, for winning the "Associate of the Month" award for March at Old Town Hall Realty. We know how he promotes Ypsilanti, both on and off the job. Ypsilanti needs more agents like him, for sure.

Tom has one historic property listing that we would like to call attention to this month:

The MILLWORKS, at 308-310-312 N. River, where the Ypsi Food Co-op and other businesses are now located. The present owners made basic improvements to the property, such as electrical and plumbing work. Anyone interested in the continued revitalization of the Depot Town area should spread the word that this important landmark is on the market. For further details, call Tom at 483-7461.

172 NORTH WASHINGTON, the fine Greek Revival style frame building just north of Centennial Center, is now listed at \$83,000 by the Charles Reinhart Co. It is two-family, 3500 sq. ft., lower unit with attractive bay window for business display. Upper unit has sun porch, gallery kitchen, fireplace. Lease/option & land contract terms possible. Call Jim Christos, 971-6100, or 662-7875 evenings.

219 NORTH WASHINGTON, the splendid 1845 cobblestone structure across Huron from the Museum and across Emmet from the Towner House, is on the market at \$72,000. It now has four units. What a wonderful place to call home, looking out on Ypsilanti's finest! Call "Dutch" Jordan, 482-3484.

LOOKING FOR AN ENGLISH PUB? Dolly's Place, formerly O'Brien's Pub, at 205 W. Michigan, in downtown Ypsilanti, is now

## THE TOWNER HOUSE NEEDS YOU !!

Are you wondering how you can make a definite commitment to Ypsilanti? Do you really want to make a mark on your community? Do you care enough to get involved?

Then call Judy White, who heads up the Towner House Children's Museum Project, and tell her about your interests.

There are two reasons why you have seen so little activity at the Children's Museum this winter: there is an urgent need for funds for more repairs, and a perhaps even more urgent need for volunteers to keep the project going and growing.

Judy plans to open the museum in the spring, before school is out, for workshops and walking trips, which incidentally always fill full when they are offered.

Would you be interested in working on a fund raising project for the Towner House? Call Judy and lay your cards on the table. Money is needed, not only to keep the heat on and the water running, but to finish the project that Judy and her husband Phil have so superbly carried forward. They've just about done it: the house is back together, as is the garage, but the upstairs needs work. Money must be found - can you help this worthwhile effort?

Judy has programs ready to go - programs which have already proved enormously successful. If you care about kids and want to help them to appreciate the past and to learn to love their community, then commit yourself and call Judy today. Judy White, weekdays, 482-6610.

LOOKING FOR AN ENGLISH PUB? Dolly's Place, formerly O'Brien's Pub, at 205 W. Michigan, in downtown Ypsilanti, is now for sale. It has the most authentic English-pub atmosphere, inside and out, of any bar in the area. Two floors above, each with two apartments, in an historic building 115 years old. \$155,000. Call Helen Bahr, Ehman & Greenstreet, 482-3484.

All the above properties are within the Ypsilanti Historic District.

---

---

### ANNUAL AWARDS DINNER !!

The 4th Annual Awards Dinner will be held EARLY this year, on Tuesday, May 14, at 6:00 pm, at the Ladies Literary Club, 218 N. Washington.

The special event of the evening will be the Annual Presentation of Historic Structure Markers.

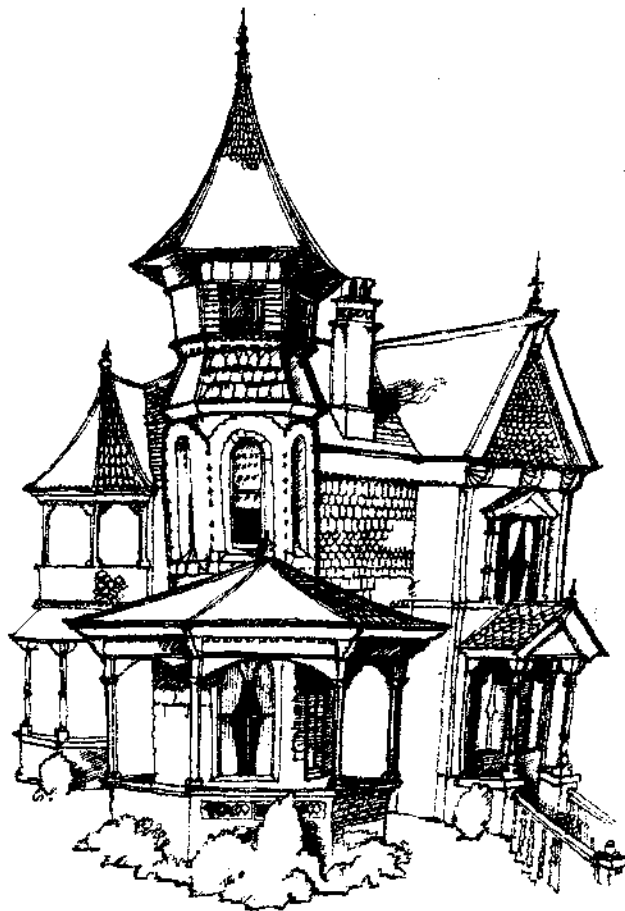
The owners of the marker buildings will be our special, honored guests.

Anyone (member or non-member) wishing to attend, please call Judy Williston, evenings, 483-1347, to let her know what you will bring to this always enjoyable, and delicious, pot-luck dinner!

---

then commit yourself and call Judy today.  
Judy White, weekdays, 482-6610.

---



## DOWNTOWN YPSILANTI - NEWS FROM MAINSTREET

Sue Mosey, Director of the Mainstreet Program for downtown, reports some interesting developments in that quarter. Of course, we all know that several businesses have closed or are closing. We know that there is an image problem. And we all know the old complaint that "nothing's going on downtown".

But we know, too, that some solid businesses seem firmly entrenched: Congdon's ACE Hardware - the handiest place in the world in any household emergency, even to a quick replacement of glass when you accidentally break a window; Campbell's Jewelers - able even to repair Mom and Dad's wedding present, a Telechron clock, dated 1924; Durant's Flowers - a first class shop by anyone's standards, both inside and out; Materials Unlimited - a nationally known storehouse of architectural gems; numerous small businesses of high quality - cleaners, tailors, shoe repair, keys, etc.; offices - doctors, lawyers, opticians, etc.; restaurants and bars - Haab's, Woodruff's Grove, Mainstreet, Mayflower, etc.; and a public library, newly endowed with funds from taxpayers who supported it at the ballot box - the finest, and prettiest, library in the area.

Now Sue reports new developments: the DDA has just hired Bill Johnson, Ann Arbor architect, to spend a day surveying the needs of the downtown in terms of public improvements, and he has laid out a plan which is already receiving serious attention. He has suggested identifying the downtown with bold visual statements at each of its main entryways: the intersections of Michigan, Congress, and Ballard; Hamilton and Michigan; Adams and Michigan; Ferris and S. Huron; and the Michigan Ave. bridge. Particularly at Adams/Michigan and at the bridge, he recommends very solid, bold plantings of BIG trees - six on either side of Michigan in front of the library and in front of Materials Unlimited. These 'groves' would be emphasized with special lighting - five or six lamps on either side. Something similar would be done at Ferris/S. Huron. At Ballard and at Hamilton, stronger statements need to be made to give notice that traffic is approaching downtown. A new downtown logo is being developed and will be utilized in these areas.

Johnson recognized all the efforts already made at improvement, but noted that these are fragmented and give a sense of clutter, when beautification was the intent.

The City is preparing a grant application to the Dept. of Natural Resources for further park improvement along the Huron River, and the entry treatment proposed by Johnson at the Michigan Ave. bridge is being incorporated into this, including the 'grove', a stairway down to Riverside Park from beside Materials Unlimited, improved parking at the south end of the park, and an extension of the already lovely trails.

Sue Mosey reports that the DDA recently sponsored a retail-mix workshop which brought two marketing consultants, Jim Bier of Detroit and Colman Levin of Washington, to study the needs of the community and to recommend the best mix of new shops for the downtown. Would you like to hear some of their suggestions? Would you like to DREAM while downtown plans and works to make it the place we all would like it to be?

Well, on N. Huron the suggestions include 2 or 3 women's clothing stores, a women's shoe store, a card & gift shop, a deli and cheese shop, fabric, craft, and hobby shops. In the H&R Block building, considered the centerpiece for the new downtown, a large appliance, computer and electronic center. For the Washington St. mall, a phone center near the Bell office, and a full-line bakery and deli.

There is also a need for a photo processing center, something like Sun Photo, with one-hour processing, a larger drug-store, a video-records shop, a jeans & casual apparel shop geared to the campus crowd, a sporting goods shop, one large or two small men's clothing stores.

Meanwhile, watch for more immediate, notable changes downtown, facade improvements at Hawkins House, expansion & facade improvement at Puffer Red, a new paint job (if not facade restoration) on Sterling Vision, and facade improvements at 18-20 N. Washington (Peg's Golden Griddle and Assoc. Group Underwriters) and at 56 N. Huron.

Those interested in the new movement in the downtown (shall we call it "The Grove"?) should consult Sue Mosey at the Mainstreet offices, 483-6680. She will soon be able to present you with a new Business Recruitment Package, which should help prospective investors and retailers in deciding the best way to go.

---

**DIRECTIONS to the Bentley:**

While there are many routes to the North Campus, here is a simple one:

Washtenaw west, past Arborland, to Huron Parkway; north (right) on Huron Parkway, across the Huron River, thru the light at Geddes (Huron High will be on your left), and straight ahead 1/2 mile to Glacier Way; left on Glacier Way to Beal; right onto Beal. Directly ahead of you then will be the Gerald Ford Museum, with tall flag pole in front. The Bentley is just beyond, with a small parking lot on the south.

If you need further directions or transportation,  
call Jack Harris at 485-2155.

---

---

**REMEMBER: MARCH IS CLEAN-UP MONTH!**

Isn't this the ugliest month of the year, with the refuse of winter resurfacing as the snow recedes? Let's set an example for our neighborhoods by promptly picking up all trash from the front lawn. (Oh, go ahead - do the back yard, too!) If fact, if anyone is gritty enough to follow the practice of Katherine Hepburn, we'll sing your praises, too! She carries a bag with her wherever she walks; she says she gets lots of exercise stretching and bending, and "It looks lovely wherever I've been". Kate, we like your philosophy!



---

**WATCH FOR HISTORIC STRUCTURE MARKER AWARDS IN THE MAY NEWSLETTER AND IN THE PRESS!!**



*Ypsilanti Heritage Foundation*

# NEWSLETTER

**NEXT MEETING:** Tuesday, May 14, 1985 - 6:30 pm  
**PLACE:** LADIES' LITERARY CLUB  
218 North Washington (corner Emmet)  
**SPECIAL EVENT:** 4th Annual Awards Banquet - Buffet Style  
HISTORIC STRUCTURE MARKERS AWARDS

Celebration is in the air! We have survived yet another beastly winter, flowers are everywhere, and much of Ypsilanti is looking very, very pretty indeed. For 11 years the Foundation has celebrated, with those owners who have shown a special dedication in maintaining or restoring their historic properties. by awarding Historic Structure Marker.

This year the Marker Committee has been forward-looking (no pun intended!) in choosing styles of architecture to recognize. A good look at the calendar indicates that we are very near the end of the 20th Century, which prompted us to recognize some of the wonderful architecture of more recent times. After all, the Foundation is primarily an educational organization, so it is quite appropriate that we try to open eyes to the glories of 20th Century architecture, as well as that of the three quarters of the 19th Century during which this community emerged.

Maintenance is essential if a building is to survive, and the committee has been at pains to select those properties where maintenance has been most in evidence. We think we have a list of award winners well deserving of recognition, and we hope that you will join us in honoring them on May 14.

For the owner, then, the marker is a BIG THANKS FOR A JOB WELL DONE; for others, especially visitors to our increasingly recognized historic town, it says WE KNOW WE HAVE SOMETHING SPECIAL AND WE'RE PROUD OF IT!

The membership will be called to arrange for a variety of tasty dishes. If you have not been called - WHETHER YOU ARE A MEMBER OR NOT - and you wish to attend this very special and pleasant event, simply call Judy Williston at 483-1347.

(Marker recipients are NOT, of course, expected to bring a dish, since they are our honored guests!)



## '85 HERITAGE FESTIVAL BIGGER AND BETTER THAN EVER!!!

Sandy Knight reports that Festival Committee members are gearing up for a bigger and better than ever Festival this year. Sandy - along with four of her fellow Festival planners, Nathalie Edmunds, Sioux Shelton, Diane Keller, and Dawn Dunleavy - recently attended the Governor's Conference on Tourism at the Shanty Creek Hilton in the Grand Traverse Region and returned with a multitude of ideas and inspiration for Festival and beyond. Governor and Mrs. Blanchard are eager to promote tourism and the theme of the conference was "Tourism is Michigan's Future". One important aspect of the program dealt with the "City Host Program", a plan to train all individuals in contact with visitors so that they will be better informed and able to communicate with visitors.

Festival itself will include all the old favorites, including Home Tour, the parade, Franzen Brothers Circus, the Wallendas, and on and on. The Living History Encampment is expected to be twice as big as last year's! New entertainments, such as a Country Pickin' and Fiddlin' Contest, will be introduced. Is it any wonder that Ypsilanti was awarded the 1983 Governor's Embassy of Tourism Award?

## NEW APPOINTMENT TO HISTORIC DISTRICT COMMISSION

Scott Diels, local architect currently employed with Tom Monahan, is the most recent appointee to the Historic District Commission. He replaces Lis Knibbe, who resigned so that she might devote more time to her downtown development commitments and to her own professional responsibilities.

## HERITAGE FOUNDATION SCHOLAR AWARDED AT EMU

The Foundation has again awarded \$500 scholarship to an EMU student. Don Bronson, a graduate major in historic preservation, has been recommended by the Director of the Historic Preservation Program, Dr. Marshall McLennan, and accepted by the Board of the Foundation as this year's recipient. Many of you knew Don in his former capacity as designer for Mack and Mack Furniture; now he has opened his own decorator shop in conjunction with Jim and Sue Palasek's new antique shop at 210 W. Michigan. Don has worked on the downtown Country Christmas and has shown serious interest in other development projects for downtown. This summer he will serve as intern for the Historic District Commission, and as liaison between that body and the Community Development Department through August 1985.

## REPORT ON NEW CODE ENFORCEMENT PROGRAM IN YPSILANTI:

If you're still under the impression that Ypsilanti is "going downhill", take another good look. Better yet, pay a visit to Lt. Jim Roberts and his crew in the Building Inspection Department located at the fire station. Two new officers have been recently hired, so the crew now stands at six.

An important new man on the scene is George Chapman, who will be dealing with the tougher cases of code enforcement - he and Lt. Roberts left for a court hearing as your editor was talking with members of the department. Another is Frank Daniels, in charge of animal control and ordinance enforcement (all those eyesores such as weeds, litter, and junk cars).





## SAVE THOSE SPINDLES!!!

Have you noticed lately the alarming number of porches in Ypsilanti which are falling victim to "spindle loss" - the replacement of spindle railings with square 1"x1" lumber? Also, round porch pillars are disappearing at a distressing rate. With the advice of a knowledgeable carpenter, lumber yard employee, or neighbor, the sad loss could often be avoided. Simply recognizing how much an owner is lessening the value of his property could deter some over-zealous, though well-meaning, owners from such "improvements".

The pressure is on landlords, under the new rental housing inspection program, to make required improvements to their properties to bring them up to code. The inspection work has been progressing on a scheduled basis over the past year, starting with Ward 4 (the midtown area), and now the south side. Most property owners are complying with the new program, knowing that eventually it will benefit them, even though it may cause an immediate hardship financially.

The better landlords are, of course, the first to comply, but don't think - because it takes longer to get to the others - that the problem cases, even the so-called "slum lords", will get off the hook. It may take longer to force them to comply, but the move is on right now to do just that.

Owners of the following buildings  
be awarded HISTORIC STRUCTURE  
MARKERS on May 14 and will be our  
very special GUESTS OF HONOR:

Tom & Bettie Dodd  
46-48-50 East Cross

James Igoe, Director  
Ypsilanti Area Public Library  
229 West Michigan

James & Mary Baker  
911 Pearl

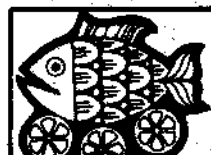
Mr. & Mrs. Don Vogelsberg  
935 Pearl

Richard & Carol Layshock  
1008 Congress

Bill & Karen Nickels  
311 North Wallace

Mrs. Charles Fortunato  
325 North Wallace

Mrs. Robert Ulrich  
408 Fairview Circle



Remember, DINNER AT 6:30 - no  
business meeting, no speaker, just a  
social gathering where everyone can  
exchange views on what's happening  
in our town - and lots of good  
things are happening! Join us!!

## ANNUAL HISTORIC HOME TOUR

The strong element of variety alone should spark interest in this year's Heritage Foundation HISTORIC HOME TOUR. Again, we should remember that this is an historic preservation home tour, and not a decorator's tour - although those interested in interior decoration will surely enjoy, and learn from this year's selection of properties on the guided tour. Variety and individuality will again be the keynote features. In most cases, you will be able to study restoration still in progress; hopefully, you will again go away with new ideas. At one address you will be able to learn about the aesthetics of furniture design of the 1950s (yes, not the 1850s, the 1950s). Classic pieces of the period will be shown. This will contrast sharply with the other selections, which vary considerably themselves, from a small Depot Town walk-up to a superb Gothic house. The impression left should be what we're looking for: a very positive, up-beat image of Ypsilanti.

With pleasure and pride, then, we announce this year's homes:

M/M Tom Mindel, 310 S. Huron

M/M Wayne Woodside, 214 N. Huron

John and Jane Van Bolt, 410 N. Huron

Eric Ward, in the old Follett House Hotel in Depot Town (the as-yet unrestored ballroom will also be shown)

David & Gail Ackley, 123 College Pl

DATE: Sunday, August 25

TIME: Noon to 5:00 pm

PRICE: \$4.00 Adults

\$3.00 Senior citizens

\$2.00 Children under 12

Guides are needed - volunteers please call Jane Van Bolt, 483-6972 or Jack Harris, 485-2155.

## WELCH HALL WAITS IN LIMBO -

No word has been heard recently as to the fate of historic Welch Hall, the 'Normal Training School' and oldest building on the EMU campus. With the University administration wrestling with the problem of EMU's image and identity, wouldn't you hope that some thought would be given to preserving, if only in a holding position, the University's most significant historic building? An exciting, viable plan for preserving and re-using Welch has been proposed to the University by architect Denis Schmiedeke. When will the University administration respond to the Regents' request for a recommendation on this worthy proposal to rehabilitate Welch for new uses?

Dr. John DiBiaggio, EMU graduate, EMU Spring 1985 commencement speaker, and soon to become president of Michigan State University, pointed out that there will soon be a severe shortage of teachers. Surely Eastern should be preparing itself to meet the challenge of preparing students for careers in teaching, and what better way to build the University's image than to awaken awareness of its proud history as the first teacher training institution west of the Alleghenies? Welch is up-front, facing Cross Street, Washtenaw Avenue, and the historic Water Tower. It could remain there (albeit with an entirely new interior) - its marvelous brick and terra-cotta Georgian Revival facade, including the stone plaque which reads "Normal Training School 1896", refurbished and shining forth in all its glory as a proud image of our history.



## MEMBERSHIP IN FOUNDATION

The Ypsilanti Heritage Foundation is a non-profit organization founded in 1974. Membership is \$3.00 for students and senior citizens, \$10.00 for individuals, \$15 for families. Send check, payable to the Foundation, to Mary Warner, Secretary/Treasurer, 510 Roosevelt, Ypsilanti, MI 48197.

The NEWSLETTER is published five times per year - in September, November, January, March and May - just before each of our five public meetings. To report items of interest which you think should appear in the NEWSLETTER, call Jack Harris, Editor, 485-2155, or write him at 510 Pearl, Ypsilanti, MI 48197.

## FESTIVAL KICK-OFF PARTY SET

If you are in any way involved in the preparation for Heritage Festival, you should soon receive a special invitation to the kick-off party, scheduled for May 29. It will be held in a large tent in Riverside Park in front of the band stand and just beneath the new Festival Offices, which will be open, in the brick building just behind the museum, on the ground level, facing the park. If you are making a contribution to Festival and don't receive an invitation, call the Chamber of Commerce.

Hope to see you there!

# Heritage News

September 1985

Ypsilanti, Michigan

**Heritage News** is the newsletter of the Ypsilanti Heritage Foundation. It is published five times a year: September, November, January, March and May; and distributed, free of charge, to its membership by mail, and made available to the public at City Hall, Farmers' Market, and various business locations in the three business districts in the City.

---

**MEETING:** Tuesday, September 24, 1985 - 7:30 pm  
**LOCATION:** 100 East Cross - Miller Motor Sales,  
World Headquarters of Hudson-Terraplane Club  
**PROGRAM:** History of the Miller Motor business, the  
building and the club  
**SPEAKER** Jack Miller, President  
**AND HOST:** Hudson-Terraplane Club

Just when you think you've seen it all in Ypsilanti, run the gamut of things to do, and are tired of the same OLD PLACES, then yet another HISTORIC STRUCTURE opens its doors for your discovery. Or so it is for us, Foundation members and friends at this, our first public meeting of the new season. Jack Miller, a familiar face in Depot Town, has generously offered us a tour of his establishment, which has stood there in the angle of Cross Street and the railroad tracks, seemingly ignoring the vicissitudes of time, almost as though it had ALWAYS been there and always will be.

How many of us, however, have even stepped inside and seen the collection of historic cars and automotive memorabilia stored there? Some of us may not have even been aware that this is the world headquarters of the Hudson-Terraplane Club, with a world-wide membership, all publications of which are printed right here in Depot Town by Standard Printing.

THIS is our chance to see and hear about another of Ypsilanti's great historic vehicle collections - remember our visit to Tom Conway's Museum in the old fire station last year?. (And if you haven't been to the Detroit Institute of Arts this summer and seen the major exhibit there which centers around the car, art, and the American scene, or ever viewed the noteworthy historic vehicle collection at Henry Ford Museum, you owe yourself those experiences.)

So, WANDER down to Depot Town on Tuesday, Sept. 24, join us for a special visit, bring your friends, and enjoy gathering with our host, Jack Miller, while he educates us informally about a bit of American history of which he and his family have been an important part.

WE'LL BRING THE REFRESHMENTS! You need only come!!

THANK YOU, THANK YOU, THANK YOU, All You Home Tour '85 Volunteers!!!

When you consider that this year's Home Tour had almost been scrapped (burn-out of some of us old duds?), until young and persistent Jane Van Bolt and a few others got their wits together and the phones ringing, you MUST BE AMAZED AND DELIGHTED to learn that the Tour was again a resounding success. Karen Nickels, again ably in command of sales, reports that 482 tickets were sold, with a deluge of sales coming on Sunday, after the washout of Festival on Saturday afternoon. Yes, we were lucky with the weather, but we were luckier with the greatest collection of volunteers this side of Heaven!

Who can forget, for example, stalwart Dorothy Humphries in the Cross Street bridge ticket booth, braving Saturday's downpour - only to return on Sunday to guide visitors through the historic court building? Or Lolly Mindel, standing in her own kitchen on South Huron, describing their love affair with that old house? Or Constance Crump, relaxing on a Charles Eames sofa, while she told us of the collection of avant-garde furniture and decorative items which lay in the rooms ahead of us? Each of us, of course, has our own store of images - the lady who was determined to have us hear the antique musical instrument in the Van Bolt bedroom, or Wayne Woodside standing smack-gab in the center of his elegant yet homey living room on North Huron, describing the Great Fire, or the variety of reactions (including "That's the greatest thing on the whole tour!") to the disaster zone known as the fabulous Follett Hall. Finally, your editor can report that he was given a personal tour of Old Town Hall by Chuck Soule, the new co-owner and resident, AFTER the crowds had gone.

So, the Foundation thanks you, one and all - home owners, guides, ticket sellers, and EVERYONE who helped to make this most HISTORIC part of Festival so successful!!!!

---

**THANKS, DON BRONSON!**

For those who missed it, we are enclosing Don Bronson's 'A Walking Tour of the Old Downtown Business District' with your newsletter. Don, you may remember, is the recipient of the Foundation's 1985 Scholarship Award. He is also in business downtown as part of the new db designs/Antique & Collection Agency at 210 West Michigan. More of his 'Walking Tours' are available at the Chamber of Commerce.

Speaking of downtown, Sue Mosey, director of the Mainstreet project, suggests that we keep an eye out for further developments, including facade improvements at the old Mellencamp's building, Century 21, the Mack & Mack building, and 34-40 North Huron.

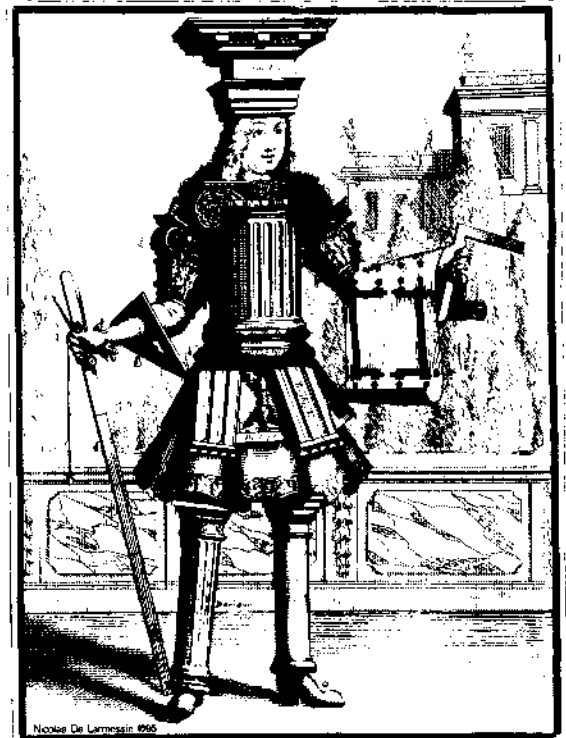


The Brown-Augustine House (c. 1834), near New Carlisle, Indiana, is a classic Greek Revival example as interpreted in the old Northwest Territory. Flanking the temple front, with its pedimented portico, are one-story wings.

---

**QUIRK MANSION (OLD TOWN HALL) CARRIAGE HOUSE:**

Renovation in progress! As you cross the bridge, going west out of Depot Town, look at the newly restored dormer windows on the old Quirk carriage house - a prelude to further restorations in progress - and KNOW that Ypsilanti is on its way UP UP UP!!!



PORTRAIT OF A PRESERVATION ARCHITECT?!

---

**OVERLOOKED (UNDISCOVERED?) TREASURE!:**

The Heritage Foundation has the entire run of OLD-HOUSE JOURNAL, that unsurpassed, limitless source of practical, helpful information on the joys and problems of old houses. There is probably no question you can ask, or bit of information you might need, that has not been covered in those 144 issues. They are all available, on loan from the Foundation, by calling Jane Bird, 483-5413.

**NEW PUBLICATIONS from HERITAGE FOUNDATION:**

**GUIDE TO YPSILANTI HISTORIC ARCHITECTURE.** The Heritage Foundation published a guide to the styles of our architectural heritage in time for sale at the Heritage Festival. In preparation for more than a year, the large, three-color, folded brochure supplies information on twenty styles of historic architecture built in the city from 1830 to 1940, and a brief history of the community. Each style is illustrated with a photograph of a local structure and its origins and characteristic features described. More than 100 historic examples are highlighted on a map of the city. Also indicated are the three historic districts: the central Ypsilanti Historic District, the Eastern Michigan University Historic District, and the Highland Cemetery Historic District, all listed on the National Register of Historic Places.

The GUIDE was the idea of local architect, Denis Schmiedeke, a member of the Foundation Board of Directors and president of the Saarinen (Michigan) Chapter of the national Society of Architectural Historians, who researched the selections, wrote the text, photographed the structures and designed the layout and graphics. Significant assistant was contributed by Jane Bird, chair of the Ypsilanti Historic District Commission, in editing, support research and type composition, and by Eric Ward, treasurer of the Depot Town Association and graduate student in architecture, in preparing the cartographics of the map and plotting the 100+ structures.

The GUIDE TO YPSILANTI HISTORIC ARCHITECTURE is currently on sale in the city for \$1.50 at River Art Works in Depot Town, the Art Attack on West Cross at College Place, at db designs/Antique & Collection Agency at 210 West Michigan, at the EMU Bookstore in McKenny Hall, and soon at some locations in Ann Arbor, as well.

**1986 CALENDAR.** With the 11th edition of its annual calendar, the Heritage Foundation continues featuring examples of Ypsilanti's historic structures. We have been proud, in previous editions, to have presented drawings and paintings by local artists.

In this new edition, twelve of our historic buildings are presented in an avant-garde photographic technique. These photo images are conversions of hue and tone from color transparencies to expressionistic, monochromatic compositions by Denis Schmiedeke, local architect and photography buff.

Available at local business places - still only \$3.00.

**SOUVENIR OF YPSILANTI, MICH.** The Foundation has re-issued the exquisitely illustrated, and now very rare, booklet of buildings, streetscapes, and bird's eye views first published about 1890. Available at local business places for \$2.00.

**DON'T DARE TELL A FOUNDATION MEMBER THAT YOU DON'T KNOW WHAT TO BUY YOUR FRIENDS FOR CHRISTMAS!**

**MEMBERSHIP IN FOUNDATION**

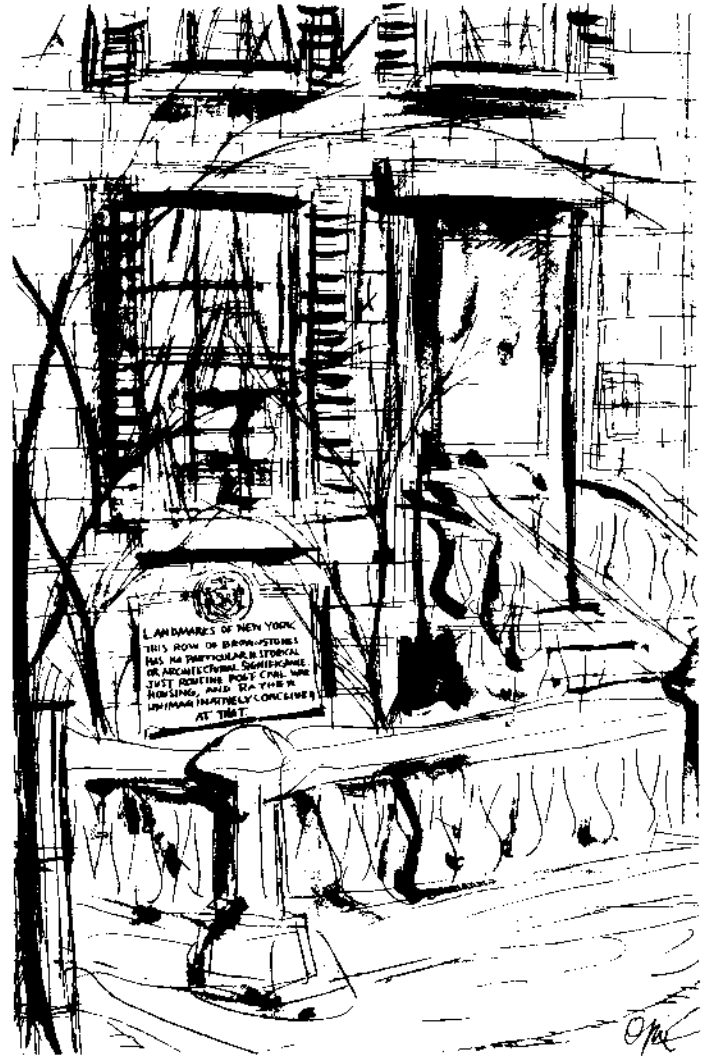
The Ypsilanti Heritage Foundation, founded in 1974, is a non-profit organization devoted to education about, and support of, Ypsilanti's historic resources.

Membership is \$3.00 for students and senior citizens, \$10.00 for individuals, and \$15.00 for families.

Please send your check, payable to the Foundation, to  
Mary Warner  
Secretary/Treasurer  
510 Roosevelt  
Ypsilanti, MI 48197

**FOUNDATION BOARD Meeting:**

The Heritage Foundation Board of Directors will meet next on Tuesday, October 8, at 7:30 pm, in Bill Fennel's home at 202 South Euron.

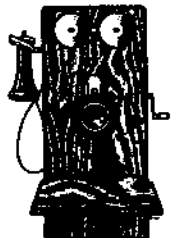


**NEW LOOK!**

In celebration of the Foundation's entering its second decade, we are pleased to introduce a new format and a new name for the publication you are reading now. For ten years, it has been simply the NEWSLETTER - now it becomes the HERITAGE NEWS with a fresh, new look!

**CALL YOUR EDITOR!**

To report items of interest which you think should appear in the HERITAGE NEWS, call Jack Harris, Editor, 485-2155, or write him at 510 Pearl, Ypsilanti, MI 48197.





# Heritage News

**Heritage News** is the newsletter of the YPSILANTI HERITAGE FOUNDATION. It is published five times a year: September, November, January, March and May; and distributed, free of charge, to the membership by mail, and made available to the public at City Hall, Farmers' Market and various business locations in the three business districts of the City.

November 1985

\* \* \* \* \*

Ypsilanti, Michigan

- MEETING:** Tuesday, November 26, 1985 - 7:30 pm
- LOCATION:** The Hutchinson House (High/Scope Foundation)  
600 North River, at Forest
- PROGRAM:** **WHAT'S HAPPENING IN YPSILANTI? - A PUBLIC FORUM**  
Neighborhoods, Community Development and Downtown
- SPEAKERS:** **Mary Steffy, City Planner, City of Ypsilanti**  
- Zoning for better neighborhoods  
- Zoning to encourage new business downtown  
**Sue Dickinson, Senior Economic Planner, City of Ypsilanti**  
- Impact of housing, rental & commercial rehabilitation programs on downtown & the neighborhoods  
- Incentives for future investment in Ypsilanti  
**Bill Durant, downtown businessman and Chair, Downtown Development Authority**  
- What's happening downtown?  
- The DDA and the Main Street program - new developments downtown, the thrust of the Mainstreet program, projects underway, and plans for the future of downtown

For most of us, finding out what's going on in Ypsilanti depends upon our casual perusal of the local presses and an occasional emotion-packed confrontation with City Council. For those who care about home, neighborhood, downtown and the city of Ypsilanti, however, this is not enough. We want to know more!

The Board of Directors of the Foundation has decided - especially since this is primarily an educational organization - to offer the public a chance to meet with key community leaders who can best answer the question, **WHAT'S HAPPENING IN YPSILANTI?**

Each speaker will spend fifteen minutes describing his/her area of expertise on the issues above. **A FEW SLIDES**, and only a few, will provide visual support information. Then the meeting will be opened for questions.

We expect the evening to be, not only interesting and informative, but a positive stimulant to our thinking about Ypsilanti and where we are going in 1986 and after. The Foundation feels fortunate in being able to engage these most professional members of city government and the business community. Let's give them an audience worthy of them!

**WE'LL BRING THE REFRESHMENTS! You need only come!!**

**COUNTRY CHRISTMAS PARADE SCHEDULED**

Thursday, December 12, at 6:30 pm. Mark it on your calendar now! Those interested in this year's Country Christmas Parade should know that the event will begin at the Farmers' Market, proceed on Cross to River, down to Michigan, through downtown to the Washington Street mall, and disperse at Woodruff's Grove. Linke's Horses will carry Santa in style, a colorful calliope will perform on the mall for carolers, the Ypsilanti High Chamber Singers will enchant us from a float, and children of all ages can meet Santa at db Designs, 210 West Michigan.

**COMING SOON!****Annual Foundation CHRISTMAS PARTY!**

All dues-paid members will be cordially invited to the annual Christmas party. If you have not received an invitation by December 3, call Jack Harris at 485-2155. Of course, we need your membership, but we also want to share the festivities with you!

**CHRISTMAS WORKSHOPS AT TOWNER HOUSE CHILDREN'S MUSEUM**

Watch for announcements of upcoming workshops, similar to the great activity programs which Judy White and her crew have presented the past two years. If you love children and want to help (or even develop a program of your own), call Judy at her office: 482-6610.

**MIDTOWN ASSOCIATION NEIGHBORHOOD WALK AN HISTORIC SUCCESS**

The Midtown Association made history in its successful walk through the Midtown area, Sunday afternoon, October 20. Not so long ago that central section of Ypsilanti was popularly looked upon as a place used and abused, with little sense of identity, in spite of its multitude of historic structures. Now, as shown by the October walk, that part of Ypsilanti has found a new life, new dedication to the old idea of 'neighborhood'. A large group of diverse citizens, along with such representatives from City Hall as Mary Steffy (see this month's program) and City Attorney John Barr, joined the walk for a show of neighborhood dedication. Certificates of Appreciation were passed out to homeowners who had taken particularly good care of their properties. Congratulations, Midtown! And don't stop marching!

**YPSILANTI FOOD CO-OP: Treat Yourself to a Visit**

On one of these dull, later autumn afternoons, treat yourself to a visit to the Ypsilanti Co-op, 312 North River. Even from the outside the historic building radiates a charm. Step inside, and you know you're in a special place: "Warm and successful", as they announce themselves in their delightful November newsletter, YpsiMix. Each person will find something to his or her own taste, difficult to find elsewhere; but everyone will find it a visual treat, an aesthetic experience!

**YPSILANTIANS TOUR LENAWEE**

Under the leadership of Denis Schmiedeke, local architect and president of the Saarinen (Michigan) Chapter of the Society of Architectural Historians, the Chapter toured Lenawee County on Saturday, October 19. Starting at the cobblestone church in Tecumseh and visiting many private residences, (including a fascinating, four-story Italianate!), the group traveled, via Clinton, to the historic Bauer Manor in the Irish Hills, where lunch was served before a blazing fire and speakers prepared the group for Hudson and Adrian. At Hudson, the group was greeted by the local banker, who had incorporated every possible architectural artifact from a demolished Queen Anne into his new bank building. In Adrian, the group did a guided walking tour through the two-block historic district, visited the Croswell Opera House, and saw an historic bank building, at one time badly remuddled by a furniture company, being restored by the bank itself which will move back into the structure once restoration is complete. Besides Denis, other Ypsilantians on the tour included Nan Plummer, Jane Bird, and Jack Harris.

**WELCOME, NEW NEIGHBORS!**

Although the DePangers, alas, have gone, South Siders are pleased to know their new neighbors at 301 South Washington, David and Juanita Hasey. Also, greetings to Steve and Shelley Kosino at 505 North River. Ypsilanti welcomes you!

**UPDATE on TEACHING OF LOCAL HISTORY**

by Rochelle Balkam

On Wednesday, October 10, the Local and Great Lakes History classes at Ypsilanti High School went on a walking tour of Ypsilanti's Historic District. The tour began at Daniel Lacey Quirk's mansion (Old Town Hall), made a circuit of Emmet, Washington, Michigan and River, then up Cross to the Gilbert mansion at North Grove and High, back to Oak to the Hutchinson house, and out River to Highland Cemetery. Despite early trepidations about walking around in a cemetery, students expressed a real interest in cemetery history. A stroll through Depot Town brought smiles to the faces of students, several of whom had never been in the area before. A tour of the Historical Museum was a highlight of the trip. Museum guides helped to bring history to life for the students. Lunch in Riverside Park was the culminating activity - luckily, no rain again this year!

Currently, the classes are deeply involved in the architectural heritage of the community, and students have learned to identify the major architectural styles found in Michigan. Some of their project work has been outstanding.

New study booklets have been prepared for the class, updating the economic history of the city. For the 1985-86 school year, the course will be separated into two semesters. Rochelle Balkam, the instructor, has been appointed to the Michigan Sesquicentennial Education Committee, so hopefully more materials will become available as a result of all the Sesquicentennial research.

**RE: HISTORIC PRESERVATION:**

"You can't teach sensitivity, but you can teach principles."

... Richard Spigelmyer, Kalamazoo



---

**WELCH HALL REMEMBERED: Will the Past Serve the Future?**

"In 1905, the campus of Michigan State Normal College consisted primarily of Welch Hall, the Science Building (Sherzer Hall), and Starkweather Hall. At least, those are the buildings most vividly recalled by Nina Sweetland, a 1905 graduate of MSNC."

... Eastern Today, Fall 1985

(Nina Sweetland (Michigan State Normal College Class of 1905), who was 101 in May, has been selected by EMU President Porter as a class leader for his newly developed Class Leader Project, which will serve the needs of graduating classes to stay in touch with the University and each other.)

A recent Detroit Free Press (Sept. 26, 2985) article captioned "Options Open for EMU's Welch Hall", quotes Vice President Robert Romkena: "I see it, personally, as becoming an administrative building". And what a superb use for such an historic resource! With an ultra-modern interior (perhaps even the cavernous, but never used, attic could become an administrative lounge, as in the nationally famous Livingston County Courthouse), and the ceilings restored to their full height, taking advantage of those tall, elegant windows - Welch Hall could be a vital, living symbol of EMU's proud history!

---